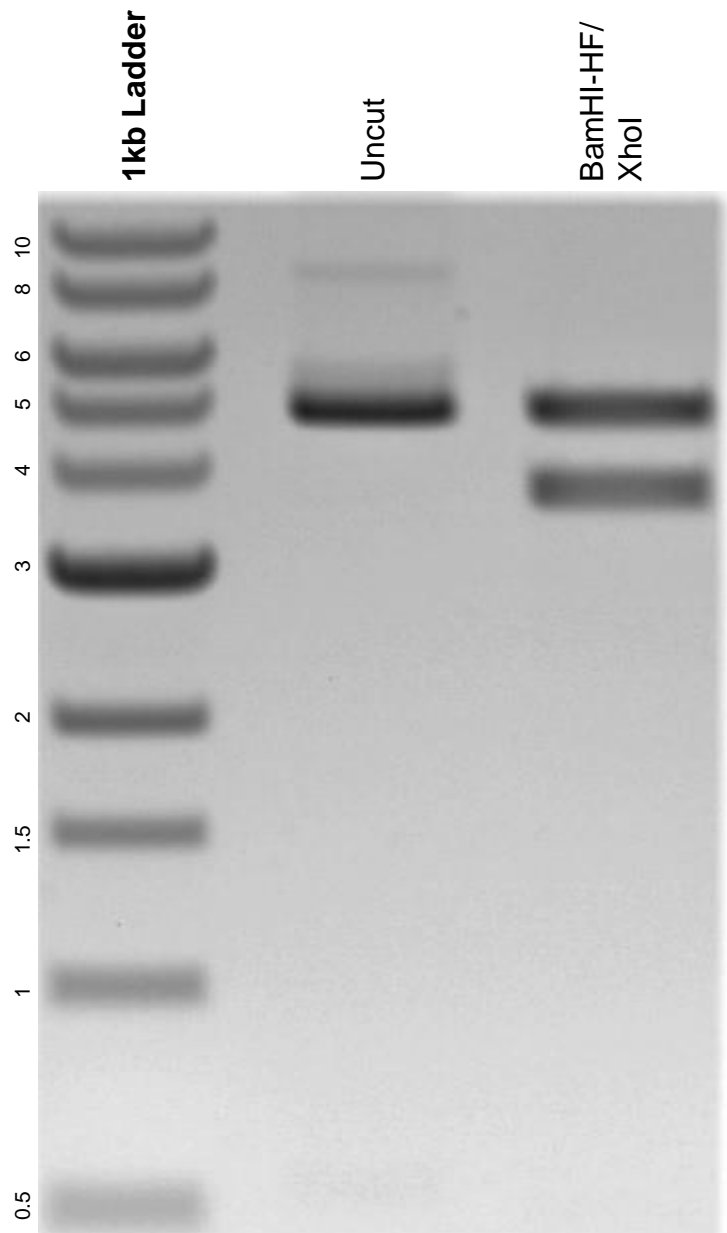


This gel depicts the NEB 1kb ladder and a digestion of the plasmid p5M-hPR-B with the following enzymes: BamHI-HF and XhoI.

**Plasmid 89114:**  
p5M-hPR-B



DNA digested with BamHI-HF/ XhoI double digest for **2 hours**.  
Gel: 0.8% agarose stained with 6 uL of ethidium bromide.  
Ran for 1.5 hours at 100 volts.