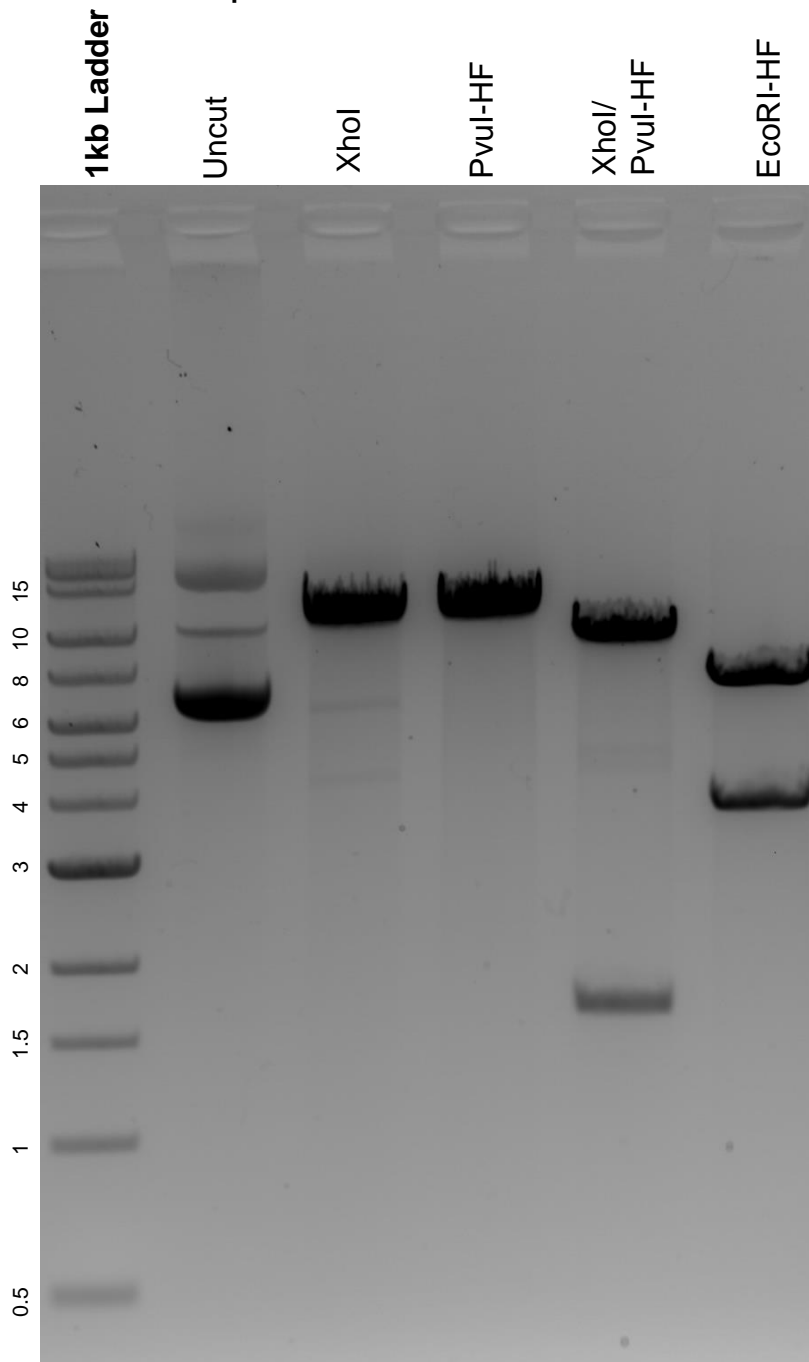


This gel depicts the NEB 1kb extend ladder and a digestion of the plasmid pFastBac-hDcr-K70A with the following enzymes: XhoI, PvuI-HF, XhoI/PvuI-HF, and EcoRI-HF.

Plasmid 89145:
pFastBac-hDcr-K70A



DNA digested with XhoI, PvuI-HF, and EcoRI-HF single digests and XhoI/PvuI-HF double digest for **2 hours**.

Gel: 0.8% agarose stained with 5 μ L of ethidium bromide.

Ran for 1.5 hours at 100 volts.