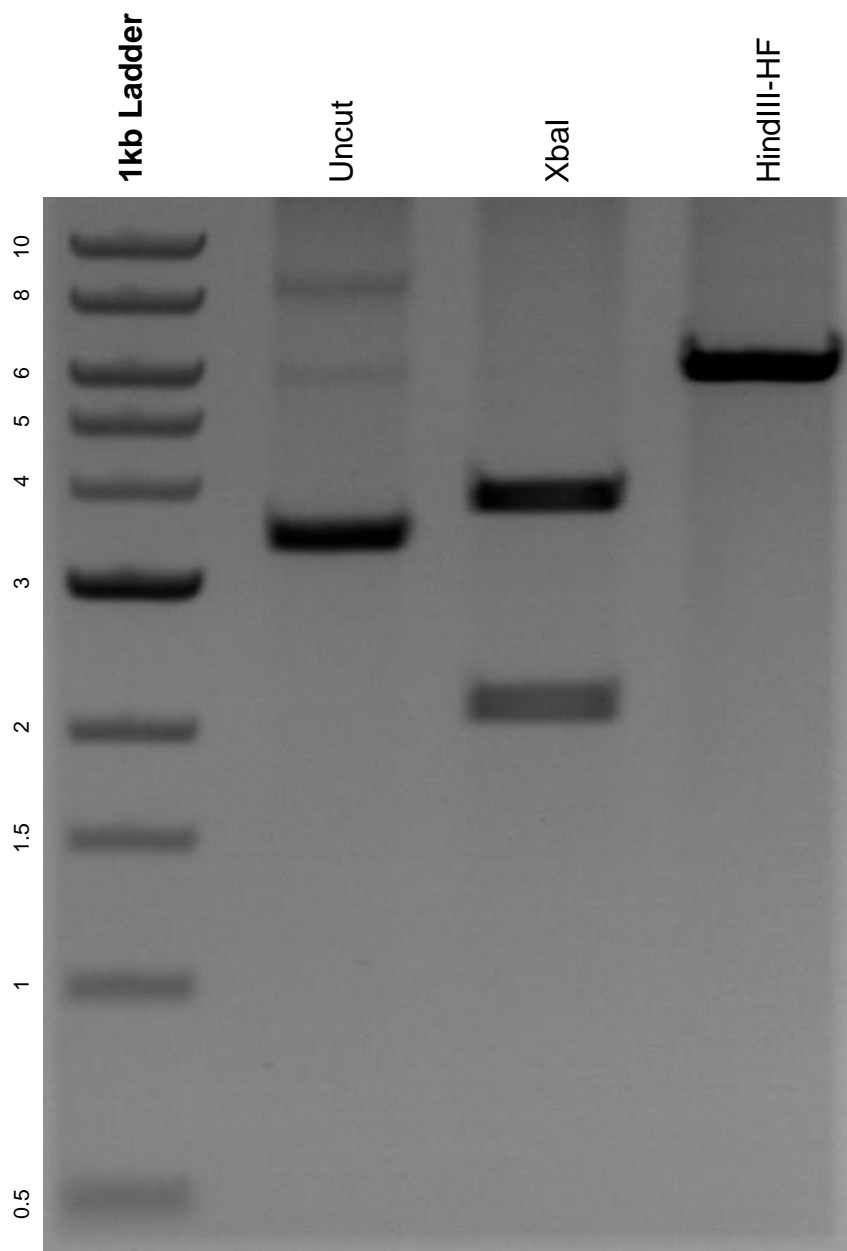


This gel depicts the NEB 1kb ladder and a digestion of the plasmid pCAG-FAST-p10 with the following enzymes: XbaI and HindIII-HF.

Plasmid 89152:
pCAG-FAST-p10



DNA digested with XbaI and HindIII-HF single digests for **2 hours**.

Gel: 0.8% agarose stained with 6 uL of ethidium bromide.

Ran for 1.5 hours at 100 volts.