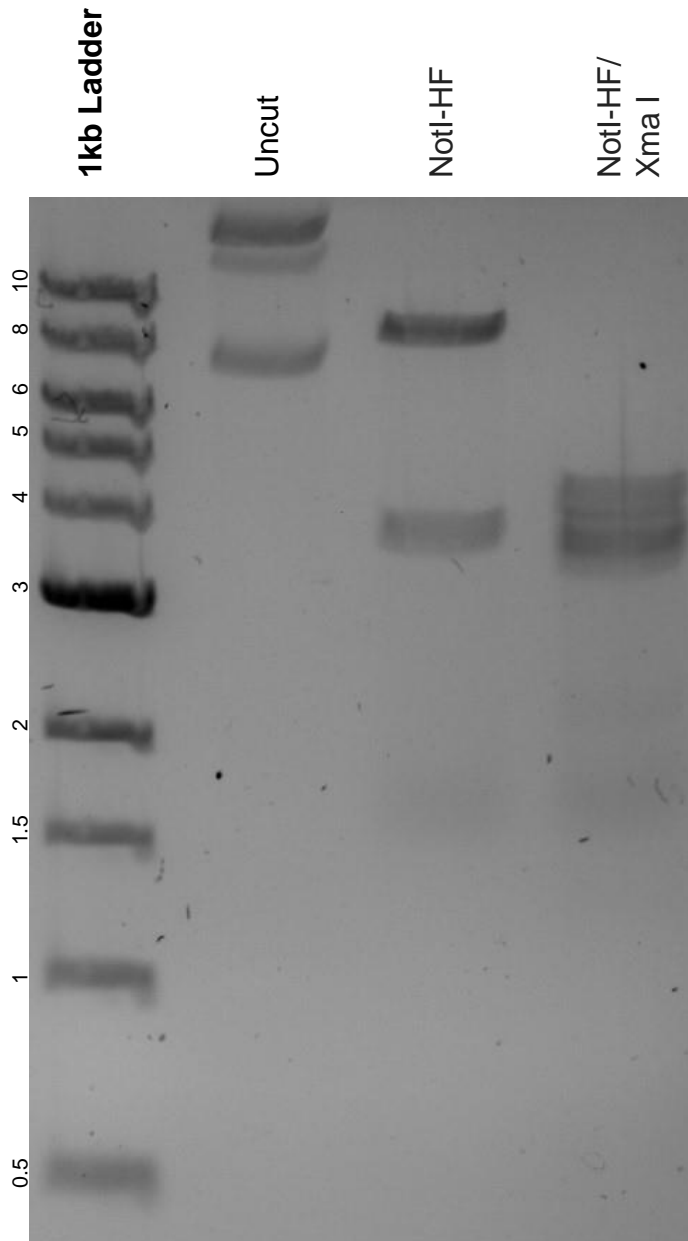


This gel depicts the NEB 1kb ladder and a digestion of the plasmid lentiMPH v2 with the following enzyme(s): NotI-HF and Xma I.

Plasmid 89308:
lentiMPH v2



DNA digested with a NotI-HF single digest and a NotI-HF/Xma I double digest for **2 hours**.
Gel: 0.8% agarose stained with 5 uL of SYBR Safe.
Ran for 1.5 hours at 100 volts.