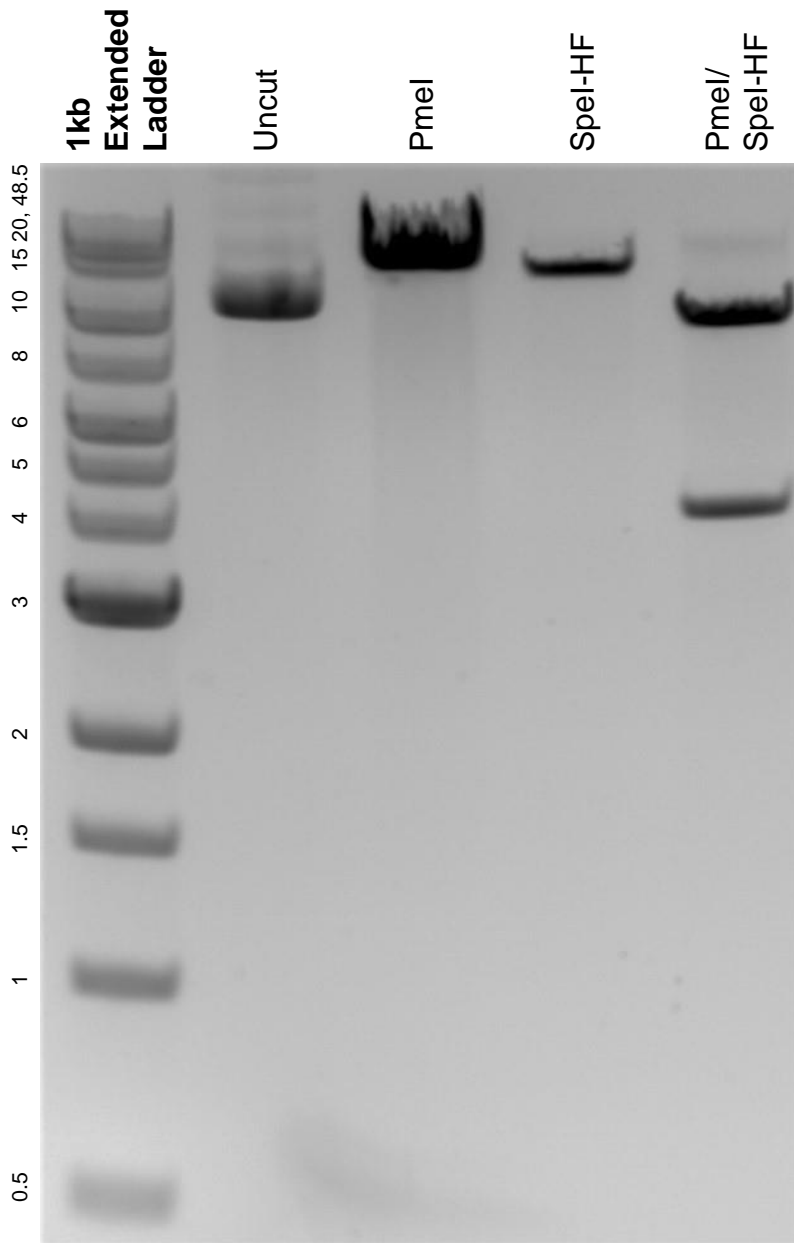


This gel depicts the NEB 1kb extended ladder and a digestion of the plasmid Lenti-dCas9-KRAB-blast with the following enzymes: PmeI and SpeI-HF.

Plasmid 89567:
Lenti-dCas9-KRAB-blast



DNA digested with PmeI and SpeI-HF single digests and PmeI/ SpeI-HF double digest for **2 hours**.

Gel: 0.8% agarose stained with 5 uL of ethidium bromide.

Ran for 1.5 hours at 100 volts.