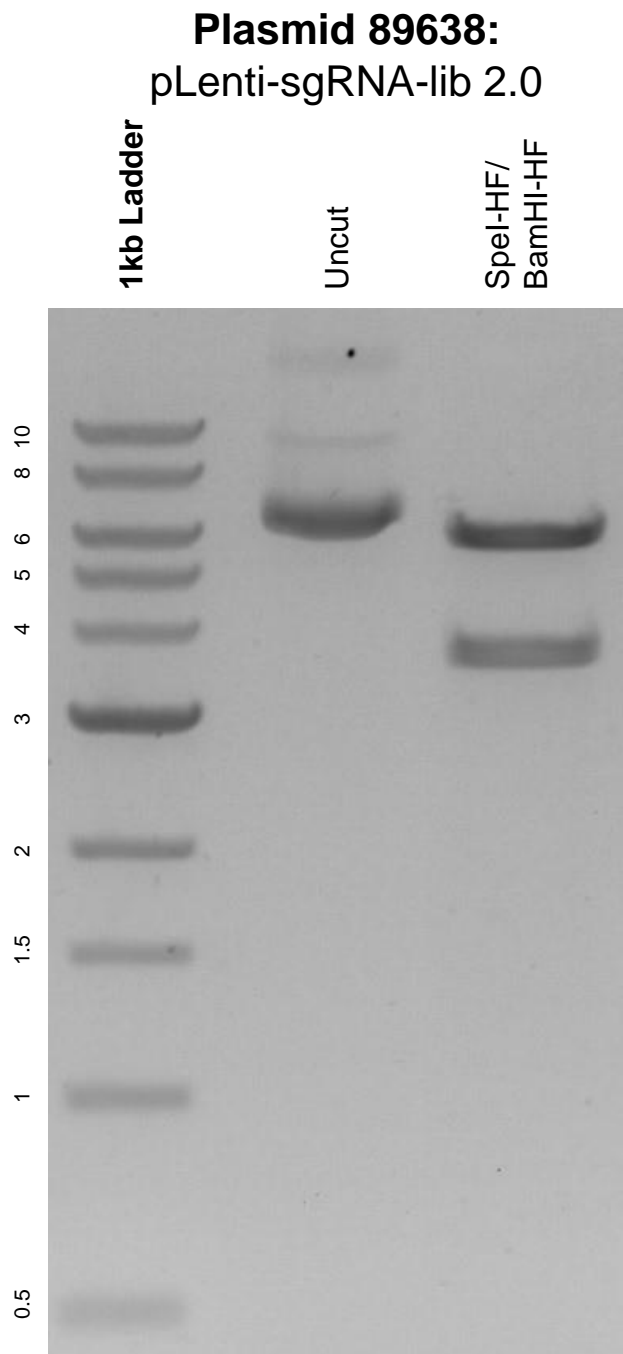


This gel depicts the NEB 1kb ladder and a digestion of the plasmid pLenti-sgRNA-lib 2.0 with the following enzymes: SpeI-HF and BamHI-HF.



DNA digested with SpeI-HF and BamHI-HF double digest for **2 hours**.
Gel: 0.8% agarose stained with 5 uL of ethidium bromide.
Ran for 1.5 hours at 100 volts.