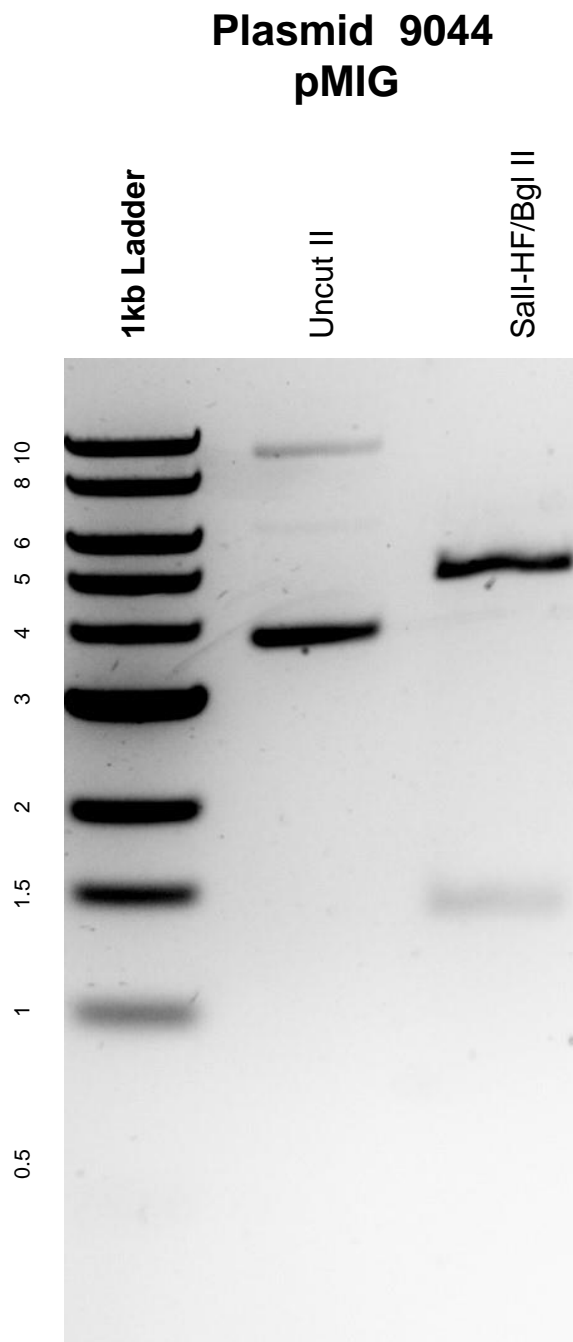


This gel depicts the NEB 1kb Ladder and a digestion of the plasmid pMIG with the following enzymes: Sall-HF and Bgl II



DNA digested with Sall-HF/Bgl II double digests for **2 hours**.
Gel: 0.8% agarose stained with 5 uL of ethidium bromide.
Ran for 1.5 hours at 100 volts.