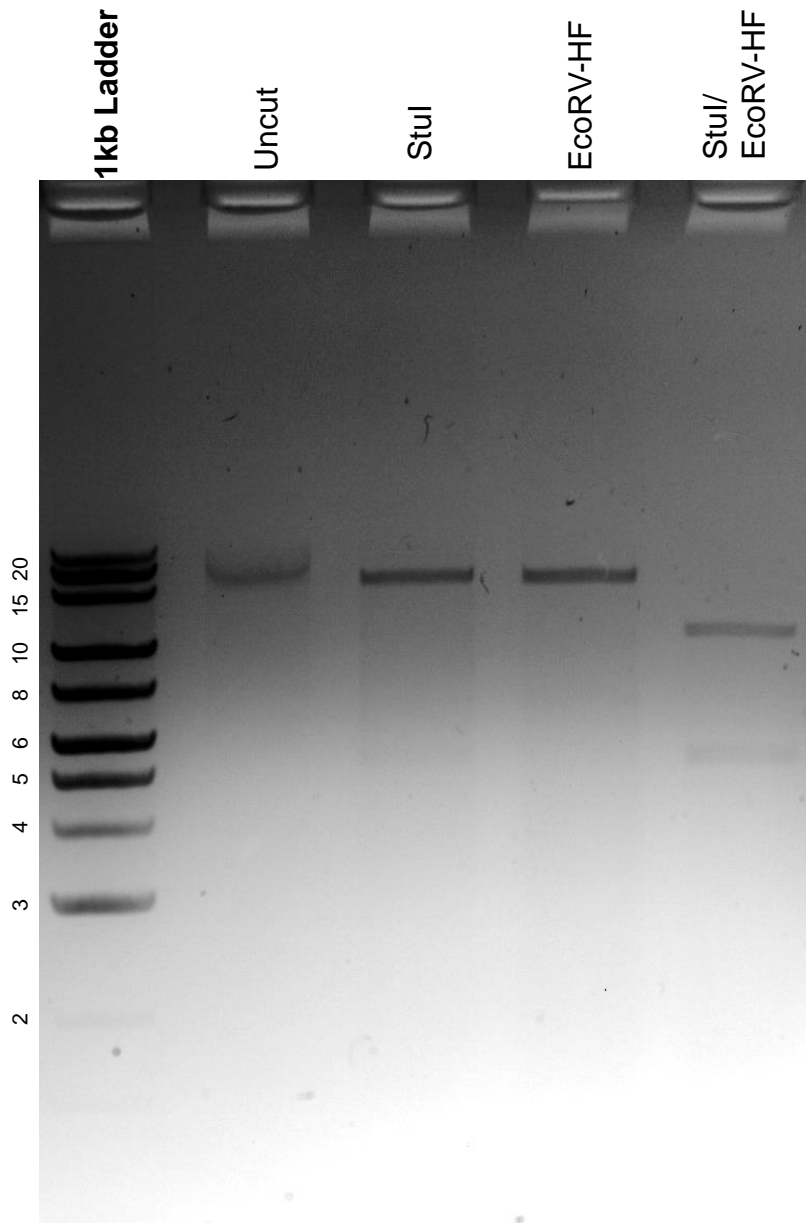


This gel depicts the NEB 1kb extended ladder and a digestion of the plasmid DD-Cas9 with filler sequence and Venus (EDCPV) with the following enzymes: *Stu*I and *EcoRV*-HF.

Plasmid 90085:
DD-Cas9 with filler sequence and Venus
(EDCPV)



DNA digested with *Stu*I and *EcoRV*-HF single digests and *Stu*I/*EcoRV*-HF double digest for **2 hours**.

Gel: 0.8% agarose stained with 5 μ L of ethidium bromide.

Ran for 1.5 hours at 100 volts.