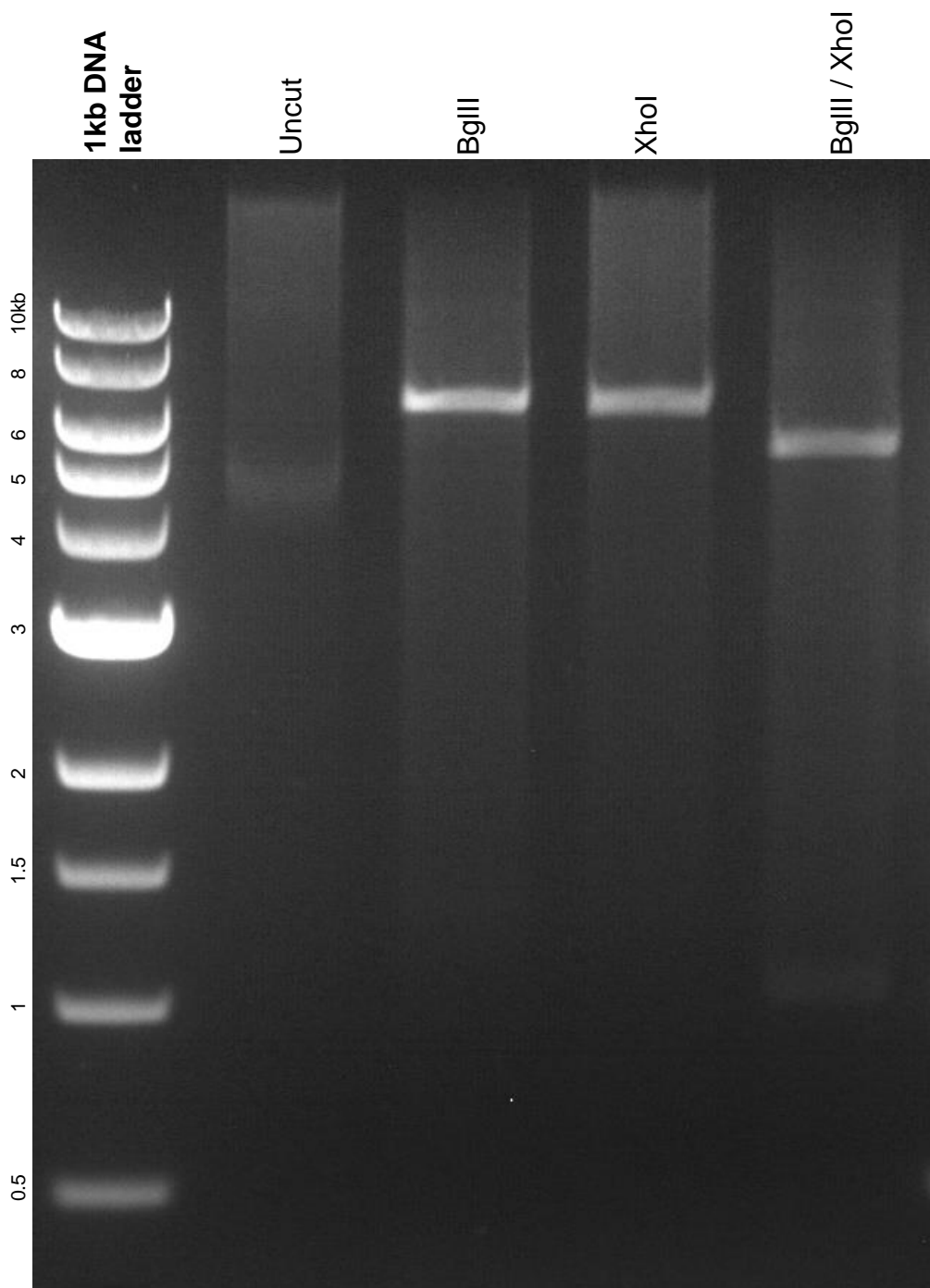


This gel depicts the NEB 1kb DNA ladder and a digestion of plasmid 90472 with BgIII and XhoI.

**Plasmid #: 90472**  
**pET28a-Cys-ELP(120nm)-LPETGG**



DNA digested with BgIII single digest, XhoI single digest, and BgIII / XhoI double digest for 2.5 hours. Gel: 1% agarose stained with ethidium bromide. Run for 1.75 hours at 80 volts.