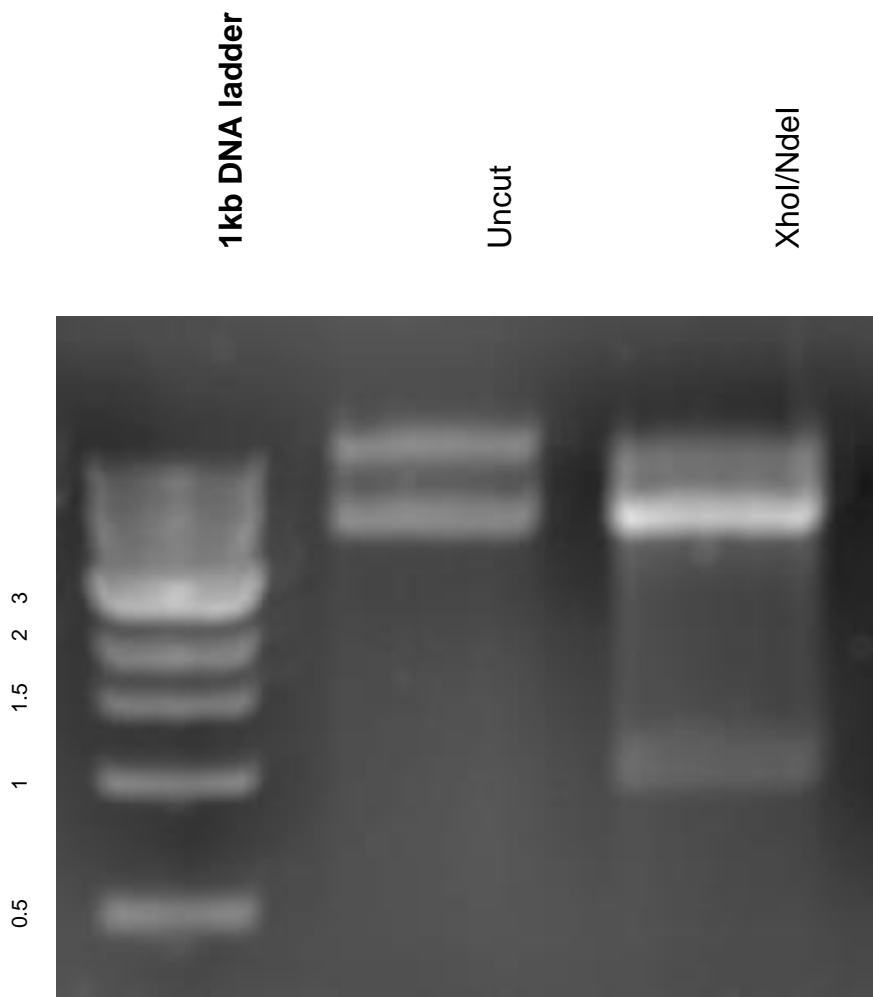


This gel depicts the NEB 1kb DNA ladder and a digestion of plasmid 90474.

**Plasmid 90474:
pET28a-HIS-TagGFP2-TEV-GGG-
ELP(40nm)-Cys**



DNA digested overnight.

Gel: 1% agarose stained with ethidium bromide. Run for 30 min at 120 volts.