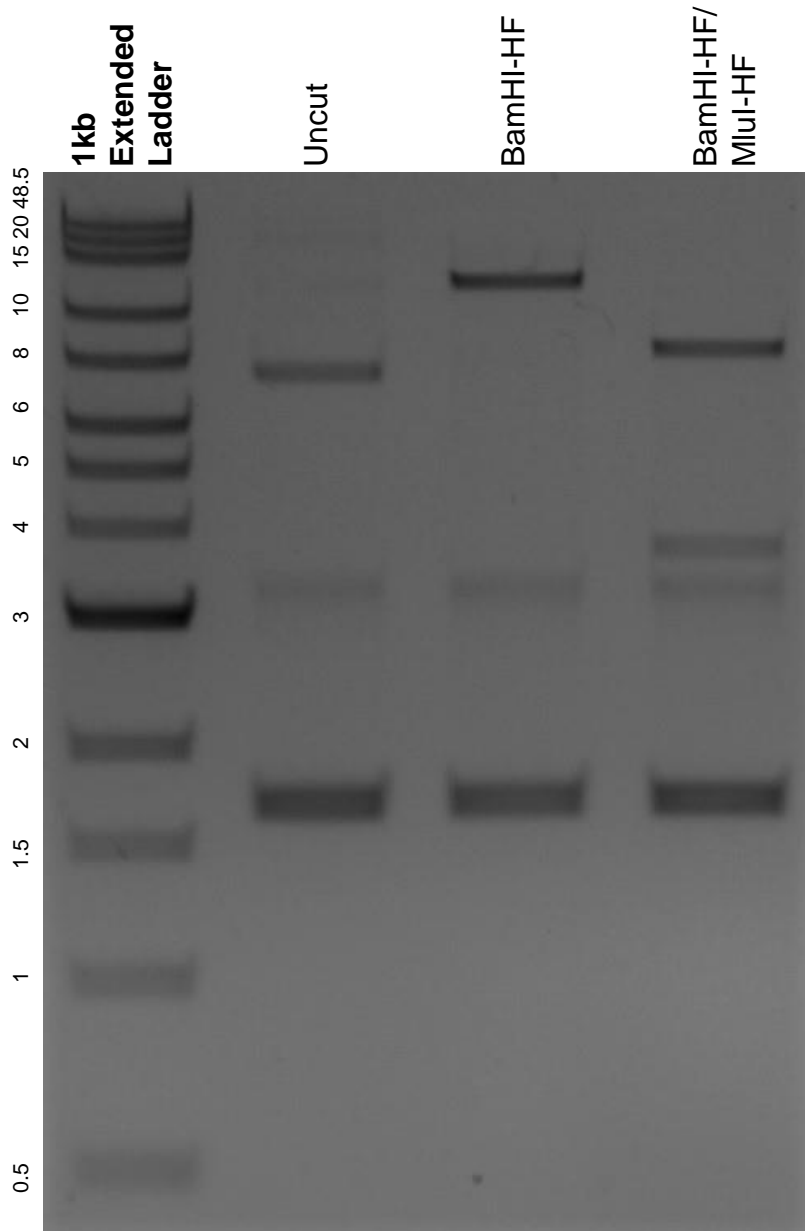


This gel depicts the NEB 1kb extended ladder and a digestion of the plasmid pPKm-230 with the following enzymes: BamHI-HF and MluI-HF.

**Plasmid 90499:**  
pPKm-230



DNA digested with BamHI-HF single digest and BamHI-HF/ MluI-HF double digest for **2 hours**.

Gel: 0.8% agarose stained with 6 uL of ethidium bromide.

Ran for 1.5 hours at 100 volts.