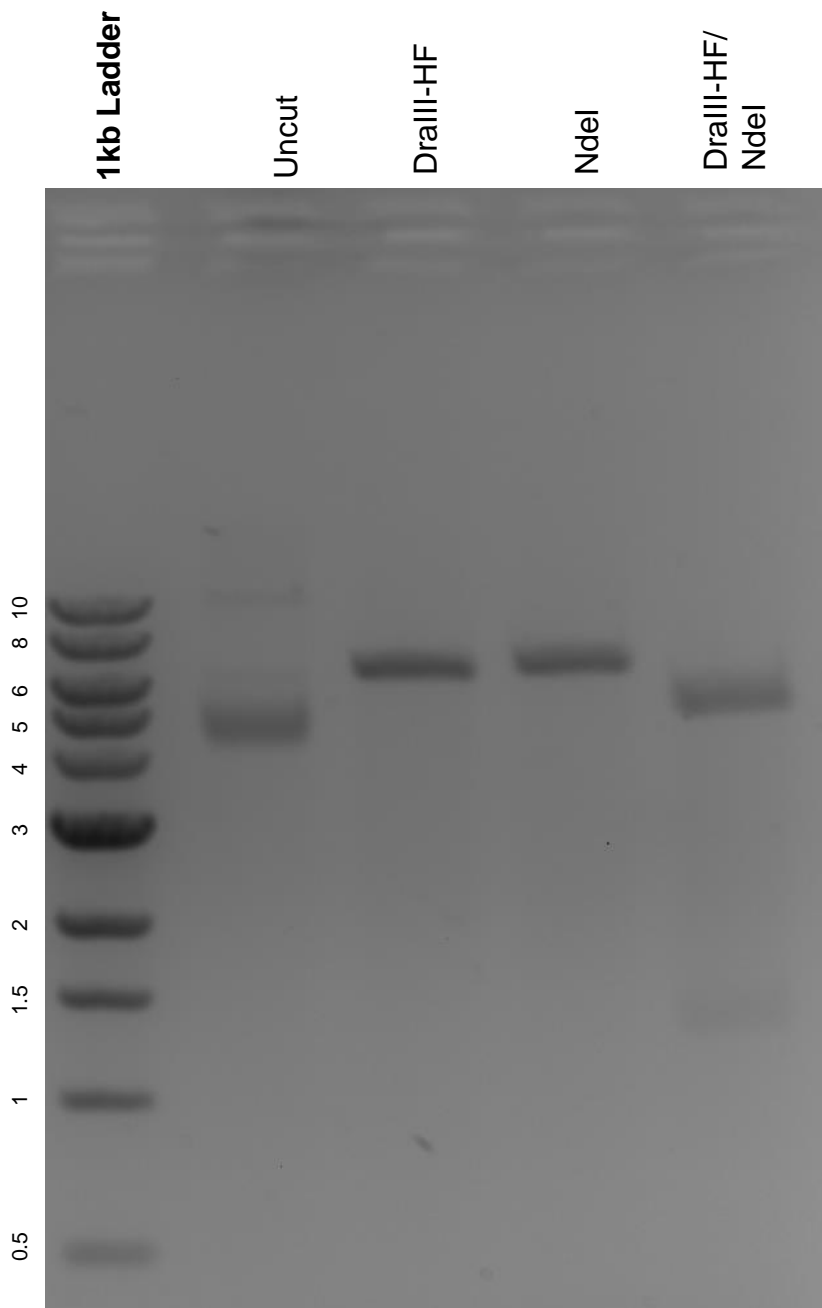


This gel depicts the NEB 1kb ladder and a digestion of the plasmid pET28a-GGG-ELP(120nm)-Cys with the following enzymes: DraIII-HF and NdeI.

**Plasmid 91572:**  
pET28a-GGG-ELP(120nm)-Cys



DNA digested with DraIII-HF and NdeI single digests and DraIII-HF/NdeI double digest for **2 hours**.

Gel: 0.8% agarose stained with 5 uL of ethidium bromide.

Ran for 1.5 hours at 100 volts.