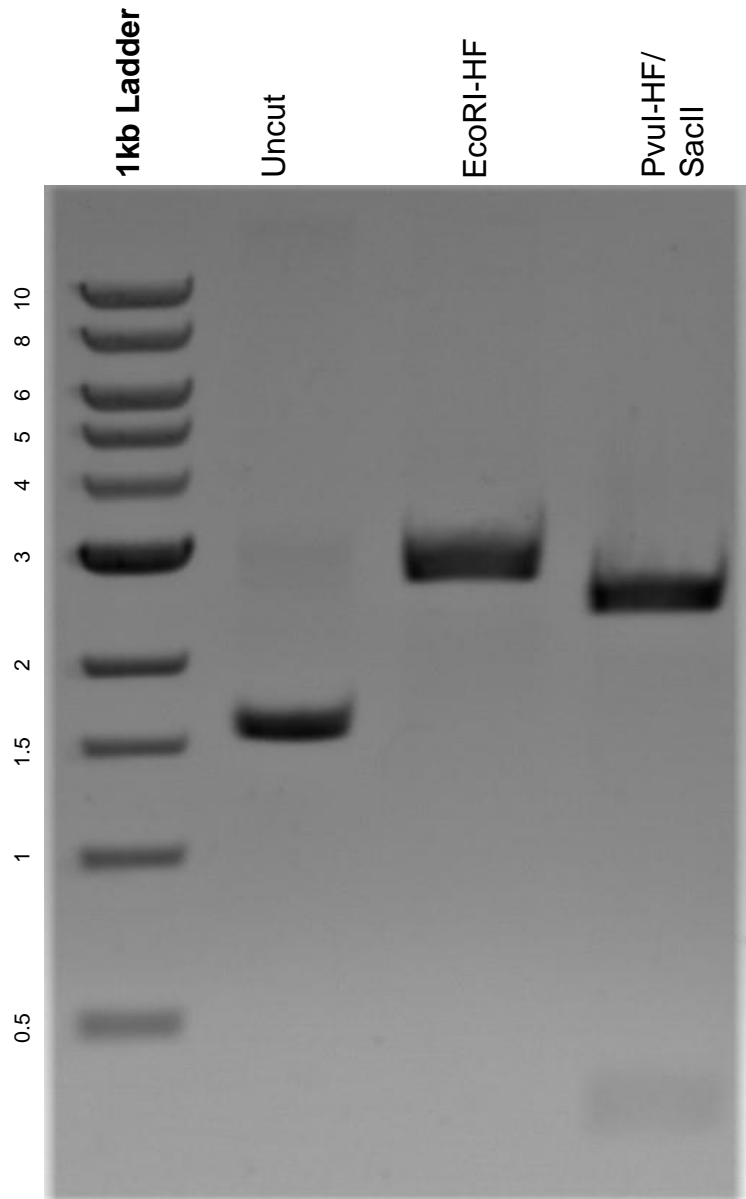


This gel depicts the NEB 1kb ladder and a digestion of the plasmid pC017 - LwCas13a guide expression backbone with tRNAval promoter with the following enzymes: EcoRI-HF, PvuI-HF, and SacII.

**Plasmid 91907:**

pC017 - LwCas13a guide expression backbone with tRNAval promoter



DNA digested with EcoRI-HF single digest and PvuI-Hf/ SacII double digest for **2 hours.**

Gel: 0.8% agarose stained with 5 uL of ethidium bromide.

Ran for 1.5 hours at 100 volts.