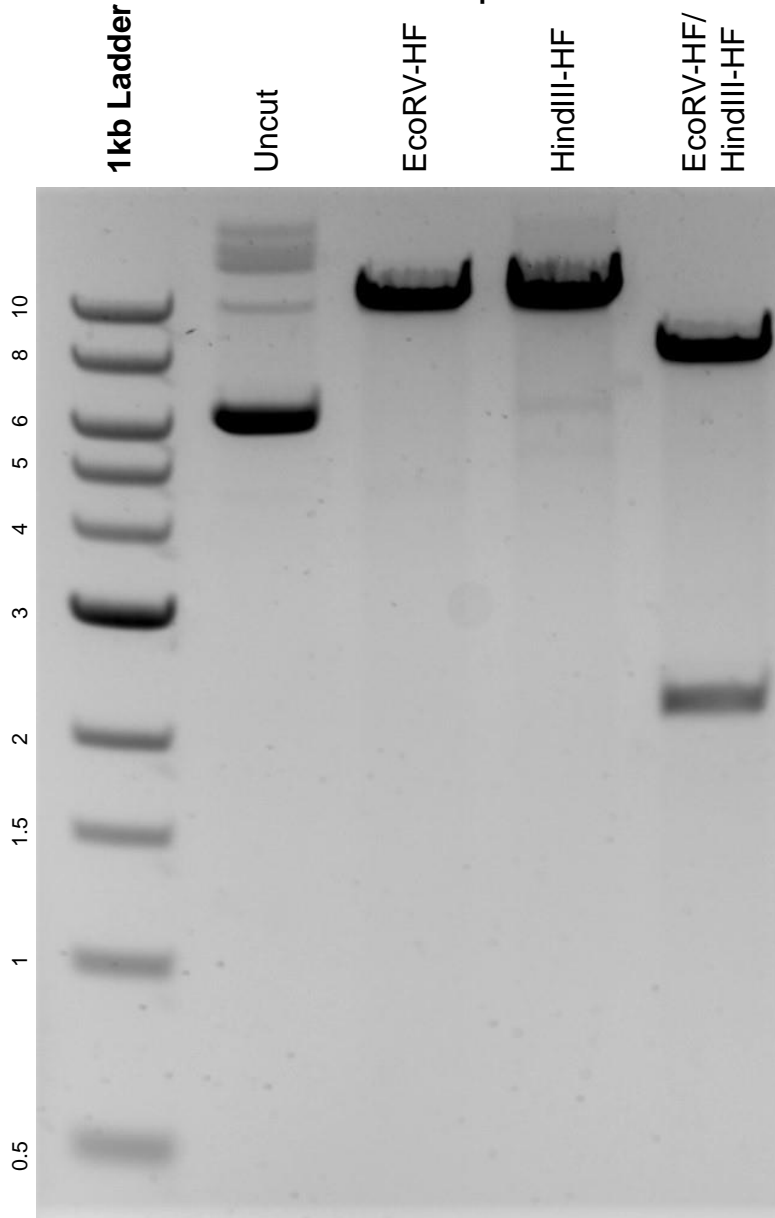


This gel depicts the NEB 1kb ladder and a digestion of the plasmid pEN114 - pCAGGS-Tir1-V5-BpA-Frt-PGK-EM7-PuroR-bpA-Frt-Rosa26 with the following enzymes: EcoRV-HF and HindIII-HF.

Plasmid 92143:

pEN114 - pCAGGS-Tir1-V5-BpA-Frt-PGK-EM7-PuroR-bpA-Frt-Rosa26



DNA digested with EcoRV-HF and HindIII-HF single digests and EcoRV-HF/ HindIII-HF double digest for **2 hours**.

Gel: 0.8% agarose stained with 5 uL of ethidium bromide.

Ran for 1.5 hours at 100 volts.