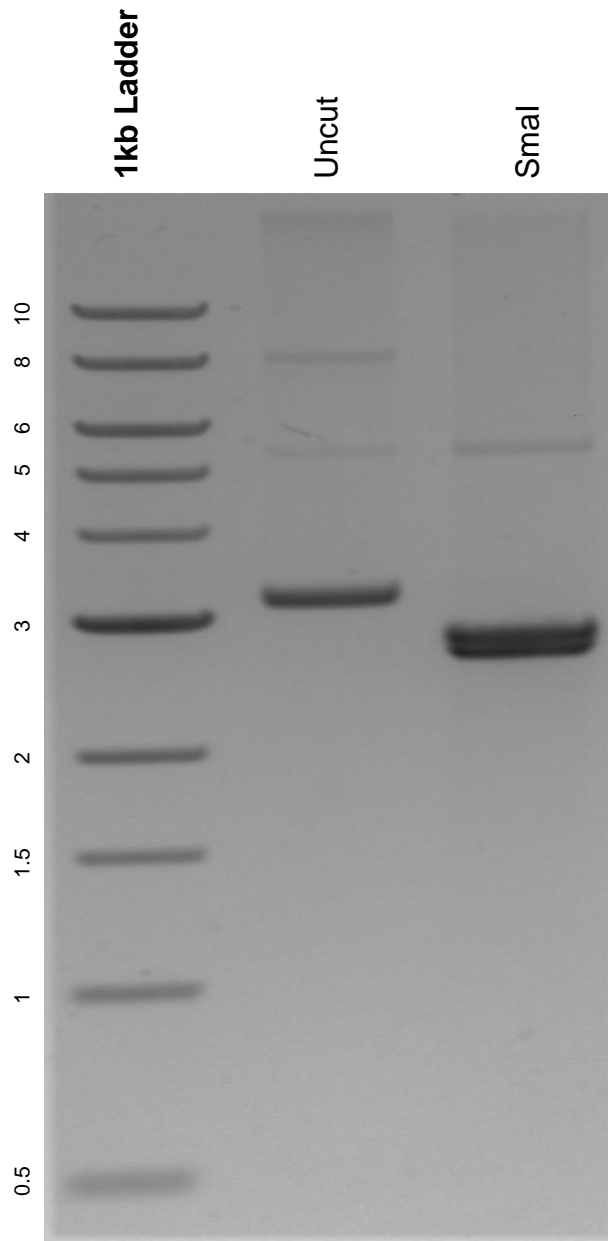


This gel depicts the NEB 1kb ladder and a digestion of the plasmid Ca-FLARE (protease) with the following enzymes: SmaI.

**Plasmid 92214:**  
Ca-FLARE (protease)



DNA digested with SmaI single digest for **2 hours**.  
Gel: 0.8% agarose stained with 5 uL of ethidium bromide.  
Ran for 2.5 hours at 90 volts.