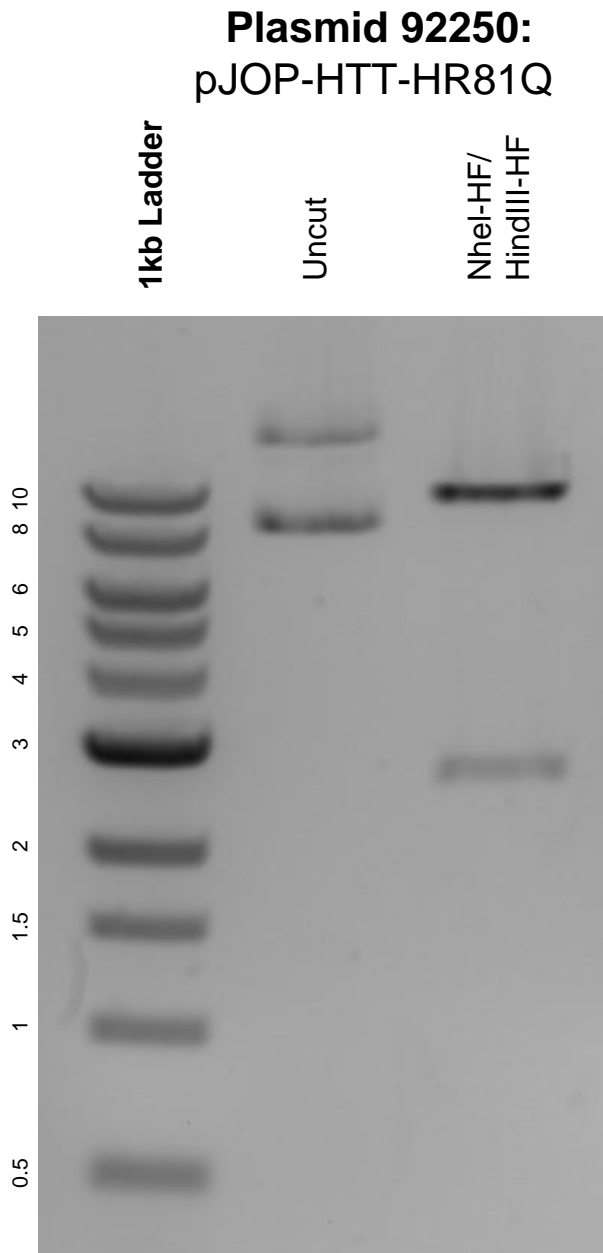


This gel depicts the NEB 1kb ladder and a digestion of the plasmid pJOP-HTT-HR81Q with the following enzymes: NheI-HF and HindIII-HF.



DNA digested with NheI-HF and HindIII-HF double digest for **2 hours**.  
Gel: 0.8% agarose stained with 6 uL of ethidium bromide.  
Ran for 1.5 hours at 100 volts.