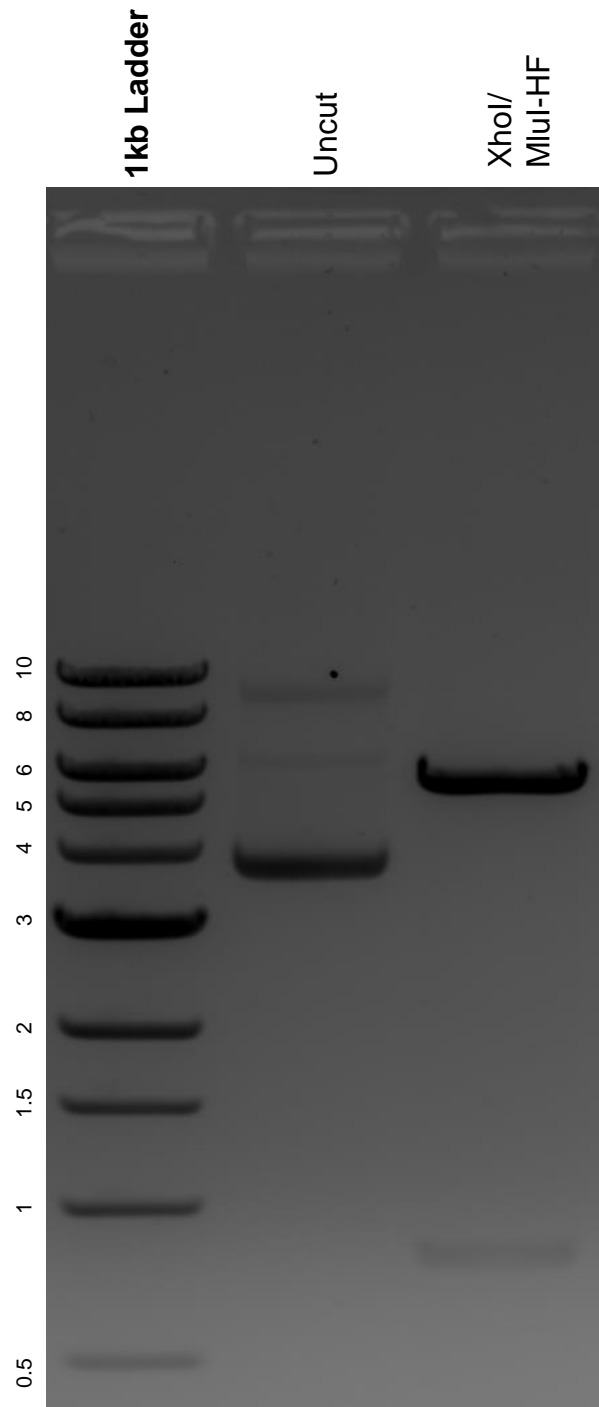


This gel depicts the NEB 1kb ladder and a digestion of the plasmid AKARet-cyto with the following enzymes: XhoI and MluI-HF.

**Plasmid 96897:**  
AKARet-cyto



DNA digested with XhoI/MluI-HF double digest for **2 hours**.  
Gel: 0.8% agarose stained with 5 uL of ethidium bromide.  
Ran for 1.5 hours at 100 volts.