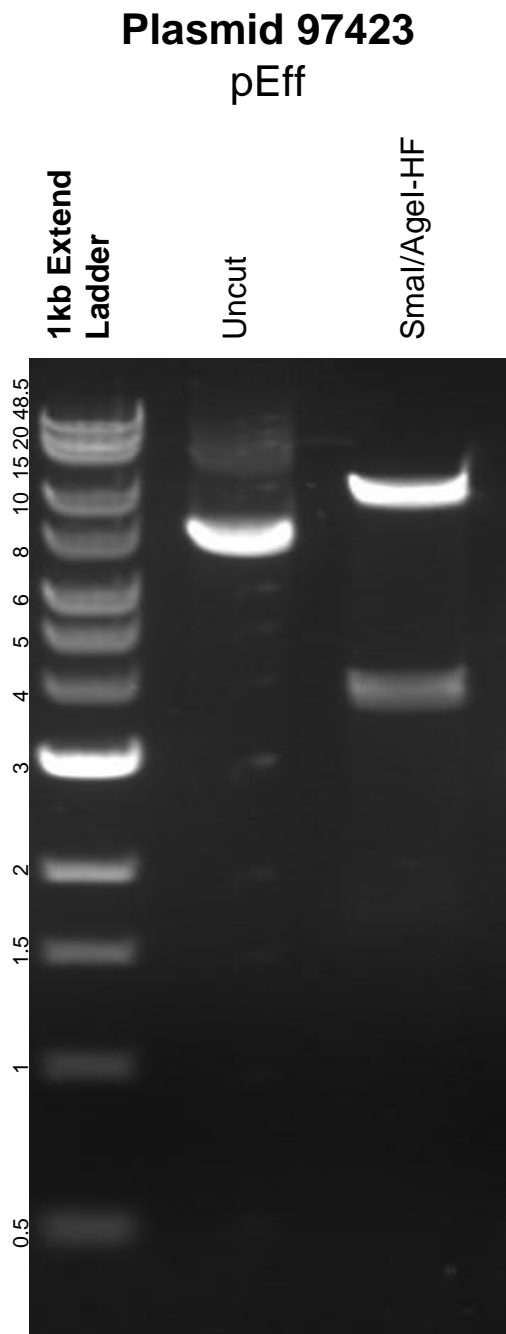


This gel depicts the NEB 1kb Extend Ladder and a digestion of the plasmid pEff with the following enzymes: SmaI and AgeI-HF



DNA digested with SmaI/AgeI-HF double digest for 2 hours.  
Gel: 0.8% agarose stained with 15  $\mu$ L of SYBR Safe.  
Ran for 1.5 hours at 100 volts.