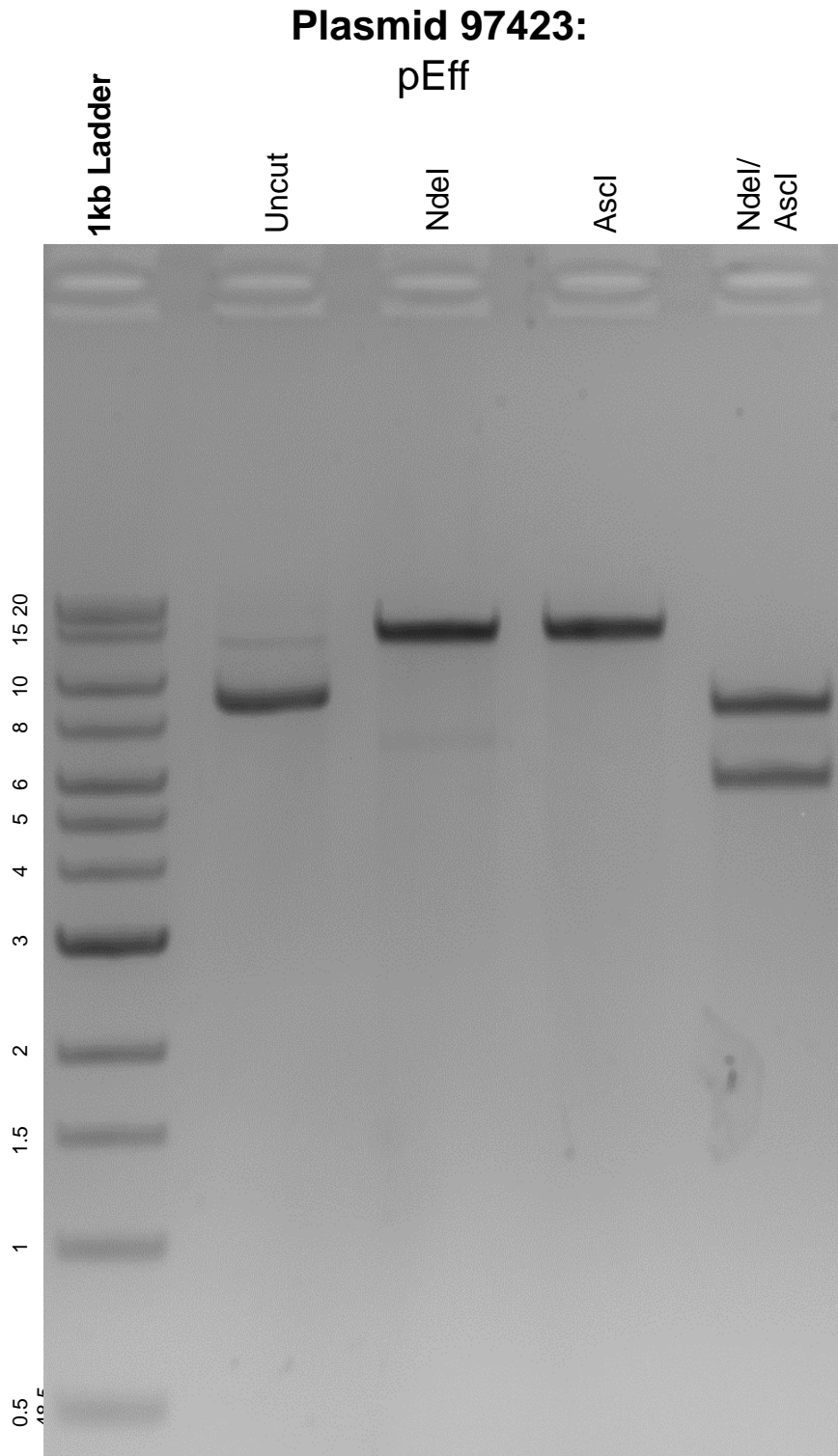


This gel depicts the NEB 1kb extend ladder and a digestion of the plasmid pEff with the following enzymes: NdeI and Ascl.



DNA digested with NdeI and Ascl single digests and NdeI/Ascl double digest for **2 hours**.  
Gel: 0.8% agarose stained with 5 uL of ethidium bromide.  
Ran for 1.5 hours at 100 volts.