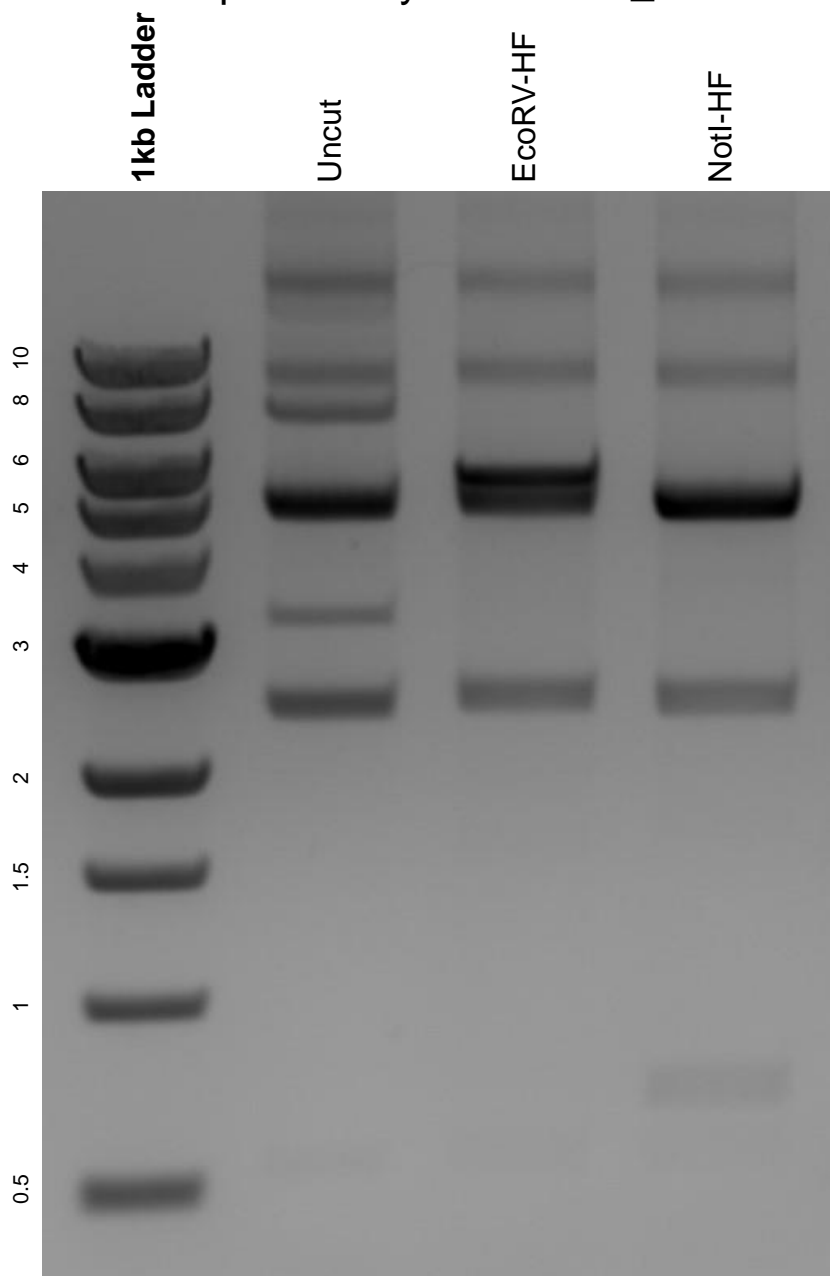


This gel depicts the NEB 1kb ladder and a digestion of the plasmid p-mCherry-N1-iChloC_CA with the following enzymes: EcoRV-HF and NotI-HF.

Plasmid 98171:
p-mCherry-N1-iChloC_CA



DNA digested with EcoRV-HF and NotI-HF single digests for **2 hours**.
Gel: 0.8% agarose stained with 6 uL of ethidium bromide.
Ran for 1.5 hours at 100 volts.