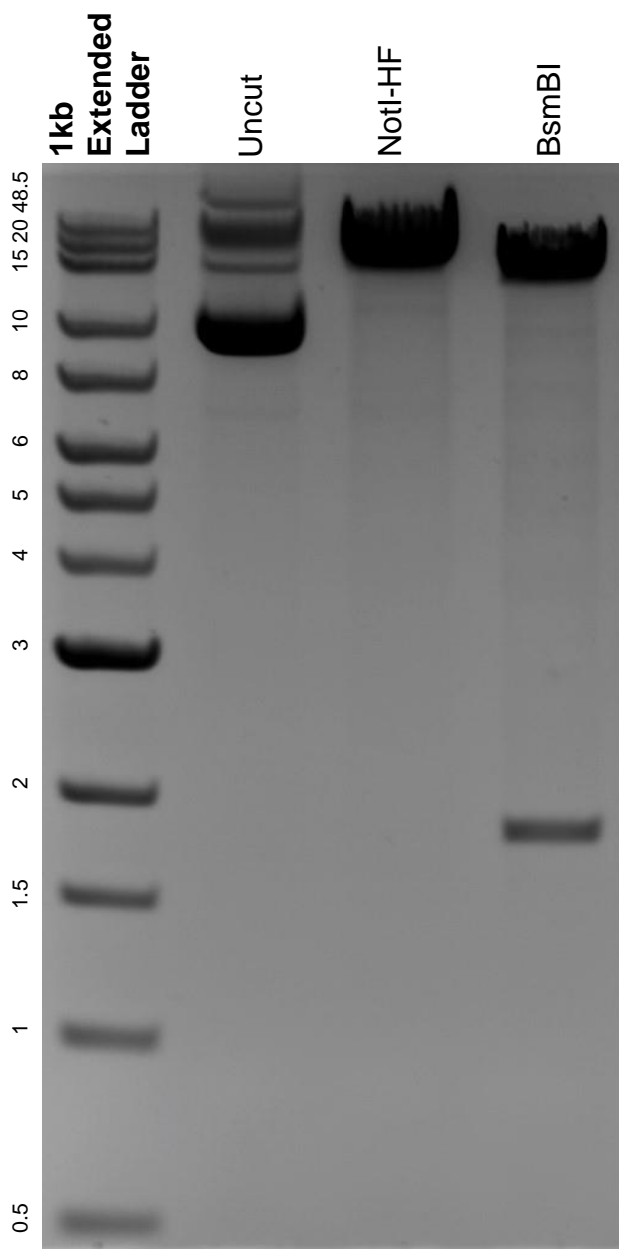


This gel depicts the NEB 1kb extended ladder and a digestion of the plasmid lentiCRISPRv2 hygro with the following enzymes: NotI-HF and BsmBI.

**Plasmid 98291:**  
lentiCRISPRv2 hygro



DNA digested with NotI-HF and BsmBI single digests for **2 hours**.  
Gel: 0.8% agarose stained with 6 uL of ethidium bromide.  
Ran for 1.5 hours at 100 volts.