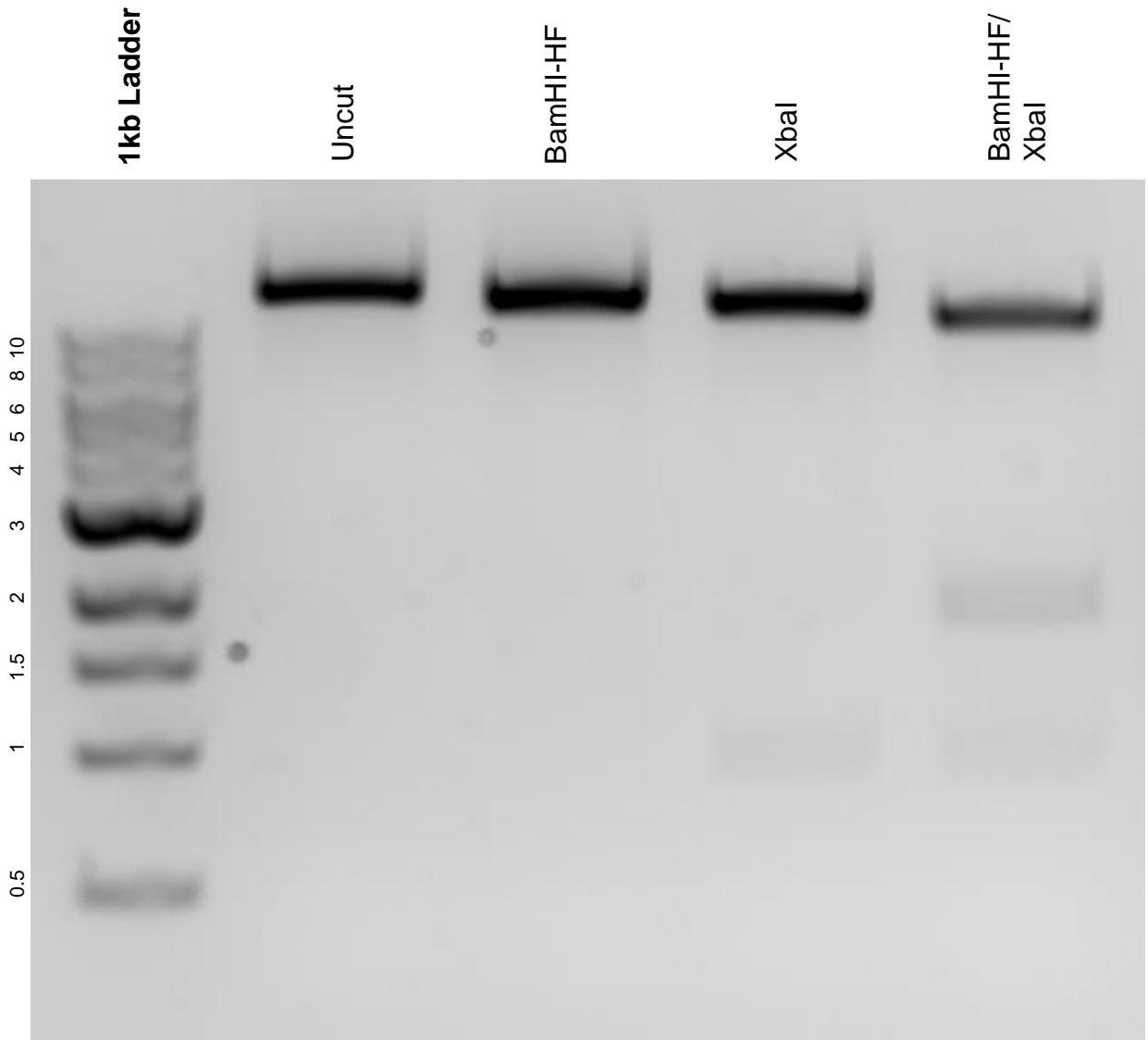


This gel depicts the NEB 1kb ladder and a digestion of the plasmid 98301 pIMVAu1 with the following enzymes: BamHI-HF and XbaI.

Plasmid #: 98301
pIMVAu1



DNA digested with BamHI-HF single digest, XbaI single digest, and BamHI-HF / XbaI double digest overnight.

Gel: 1% agarose stained with 5 μ L of ethidium bromide.

Ran for 1.5 hours at 80 volts.