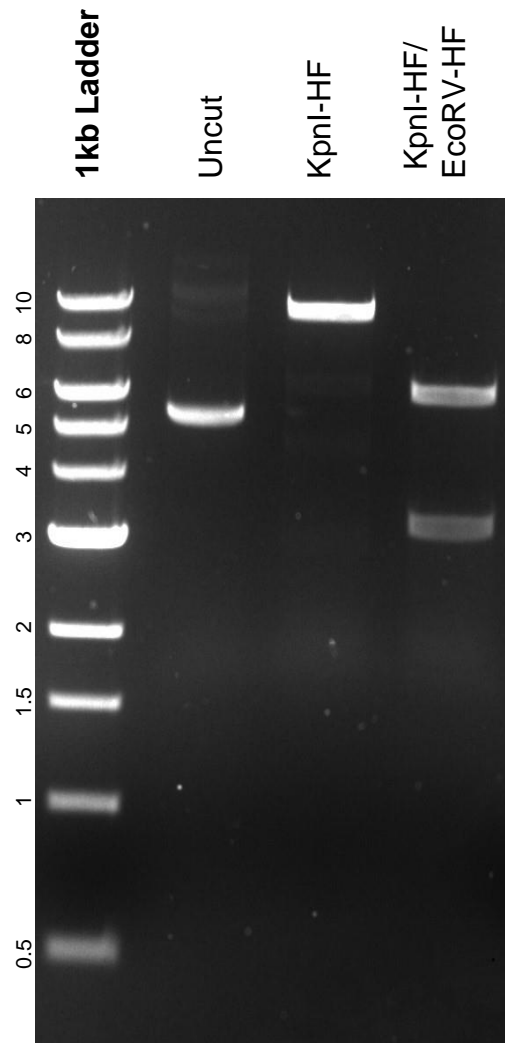


This gel depicts the NEB 1kb Ladder and a digestion of the plasmid BMP4_pLX307 with the following enzymes: KpnI-HF and EcoRV-HF

Plasmid 98321
BMP4_pLX307



DNA digested with KpnI-HF single digest and KpnI-HF/ EcoRV-HF double digest for 2 hours.
Gel: 0.8% agarose stained with 15 uL of SYBR Safe.
Ran for 1.5 hours at 100 volts.