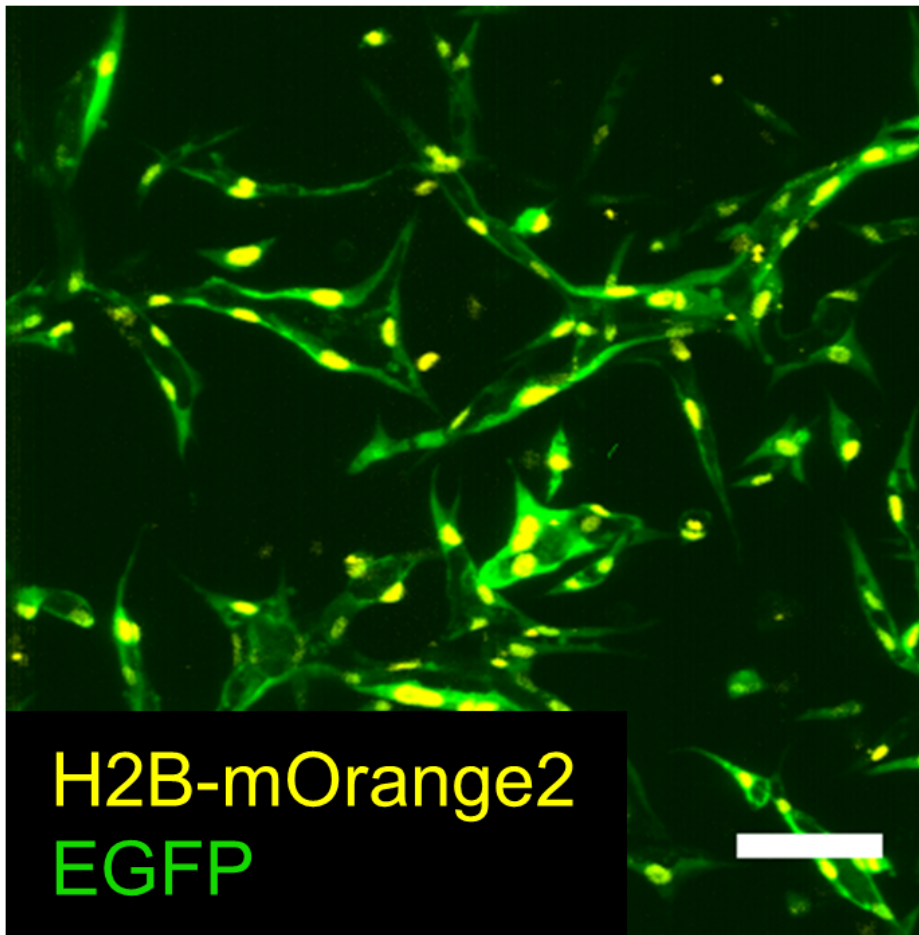
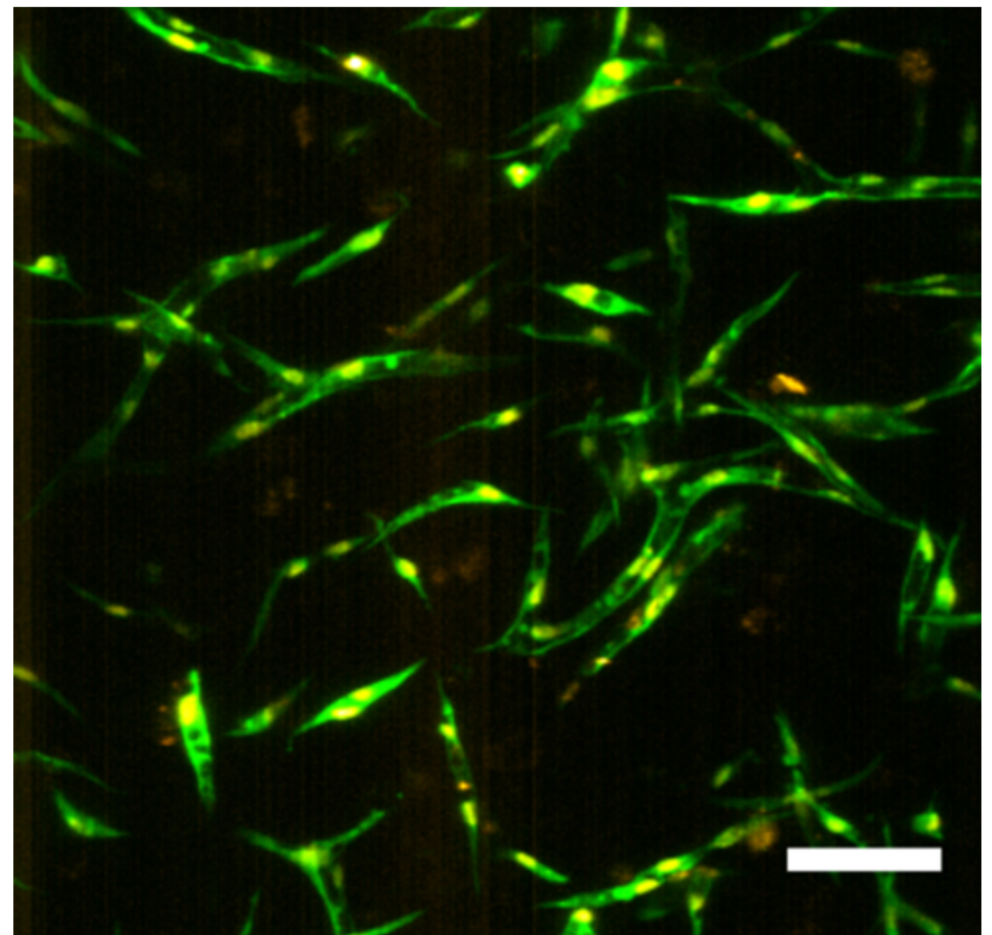


AddGene Plasmids #99277 and #99278, Deposited by [Jordan Miller Lab](#)

Tubulogenesis of co-cultured human iPS-derived endothelial cells and human mesenchymal stem cells in fibrin and gelatin methacrylate gels. Calderon GA, Thai P, Hsu CW, Grigoryan B, Gibson SM, Dickinson ME, Miller JS. *Biomater Sci.* 2017 Jun 29. doi: 10.1039/c7bm00223h. 10.1039/c7bm00223h [PubMed 28661522](#)



Z-thickness = 200  $\mu\text{m}$



Z-thickness = 200  $\mu\text{m}$