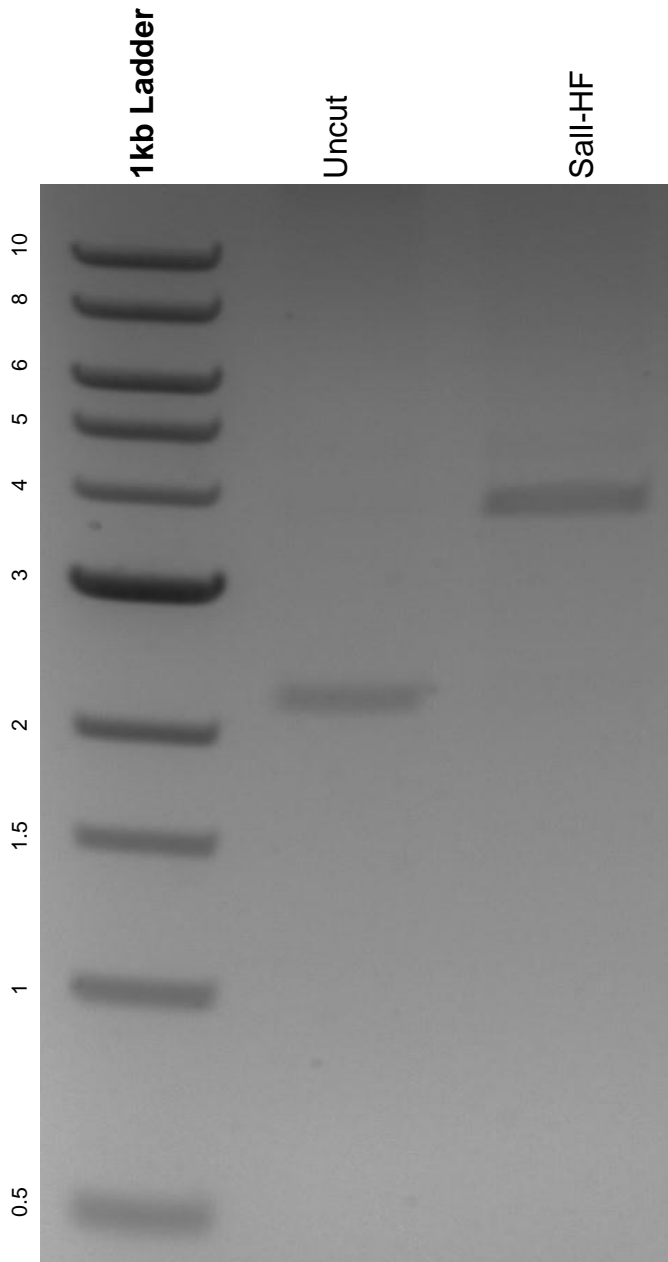


This gel depicts the NEB 1kb ladder and a digestion of the plasmid hSTARR-seq_ORI vector with the following enzymes: Sall-HF.

Plasmid 99296:
hSTARR-seq_ORI vector



DNA digested with Sall-HF single digest for **2 hours**.
Gel: 0.8% agarose stained with 6 uL of ethidium bromide.
Ran for 1.5 hours at 100 volts.