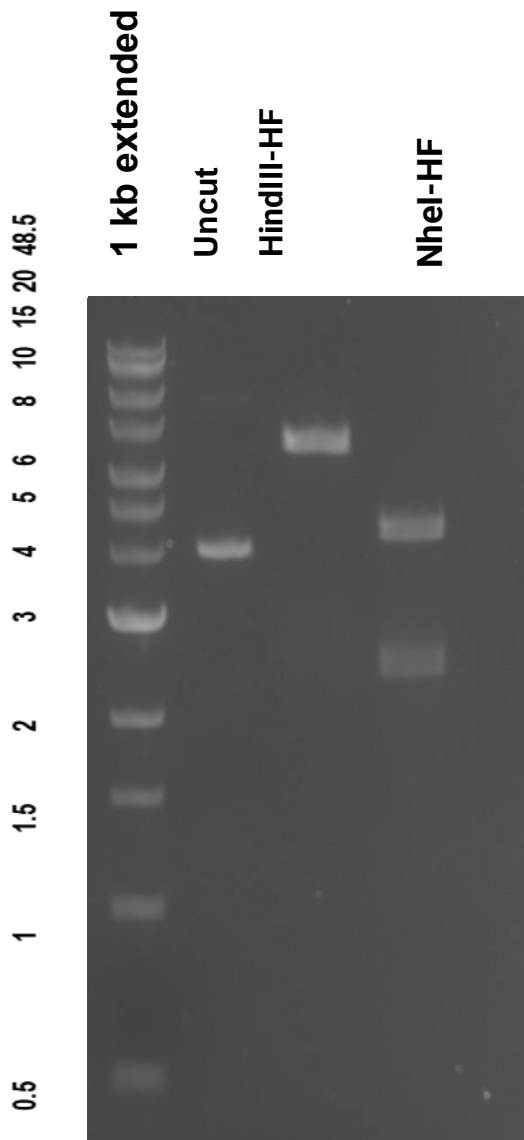


This gel depicts the NEB 1 kb extended Ladder and a digestion of the plasmid **pDB070.iodo.5** with the following enzyme(s): **HindIII-HF** and **NheI-HF**

Plasmid 99397: pDB070.iodo.5



DNA digested with **HindIII-HF** and **NheI-HF** single digest for **1 hour**.
Gel: **0.8%** agarose stained SYBR Safe.
Ran for **1.15** hours at **100** volts.