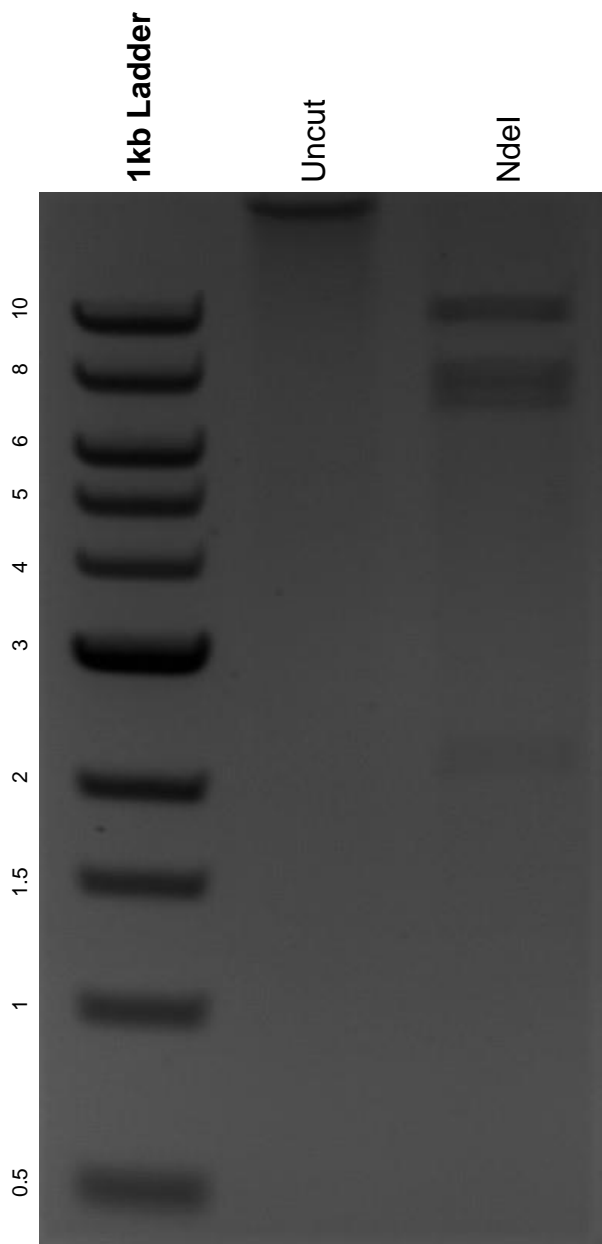


This gel depicts the NEB 1kb ladder and a digestion of the plasmid iChr2-Notch Mosaic (SO250) with the following enzymes: NdeI.

Plasmid 99752:
iChr2-Notch Mosaic (SO250)



DNA digested with NdeI single digest for **2 hours**.
Gel: 0.8% agarose stained with 6 uL of ethidium bromide.
Ran for 1.5 hours at 100 volts.