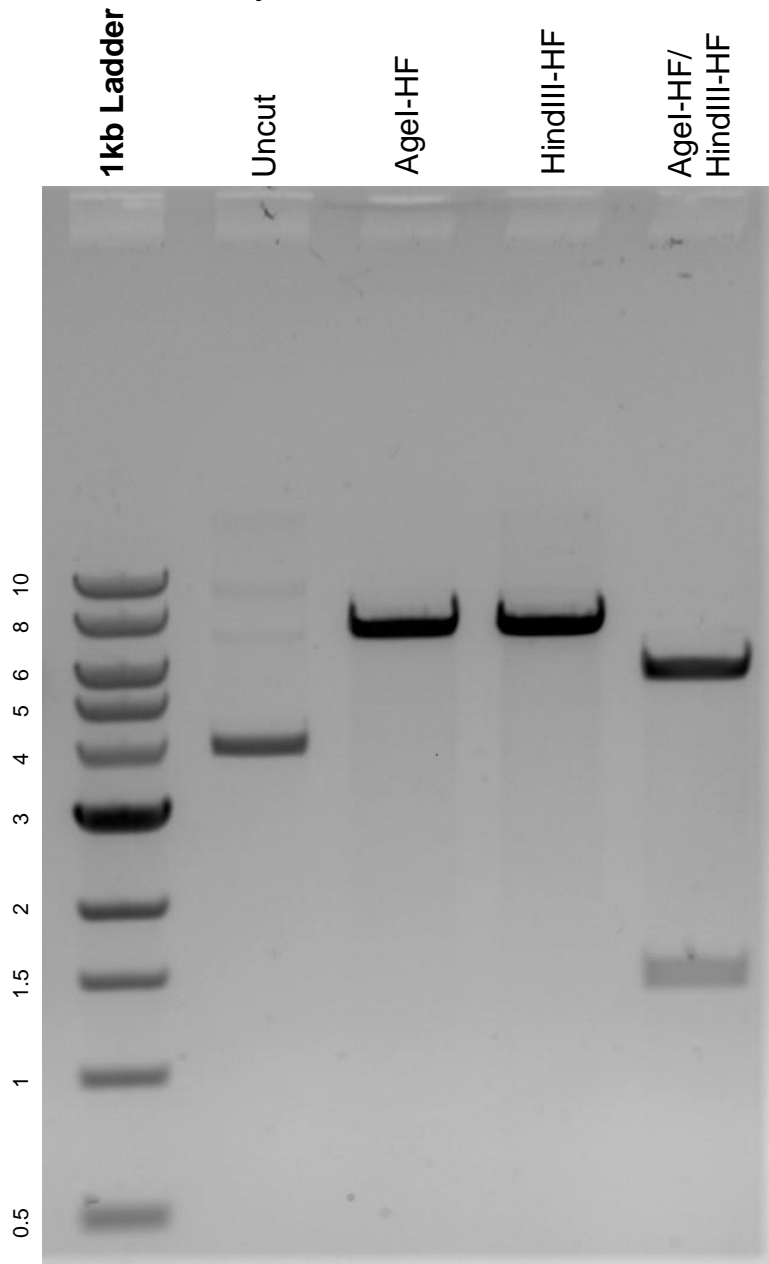


This gel depicts the NEB 1kb ladder and a digestion of the plasmid Syn-ChR-tdTomato with the following enzymes: AgeI-HF and HindIII.

Plasmid 99843:
Syn-ChR-tdTomato



DNA digested with AgeI-HF and HindIII-HF single digests and AgeI-HF and HindIII-HF double digest for **2 hours**.

Gel: 0.8% agarose stained with 6 uL of ethidium bromide.

Ran for 1.25 hours at 100 volts.